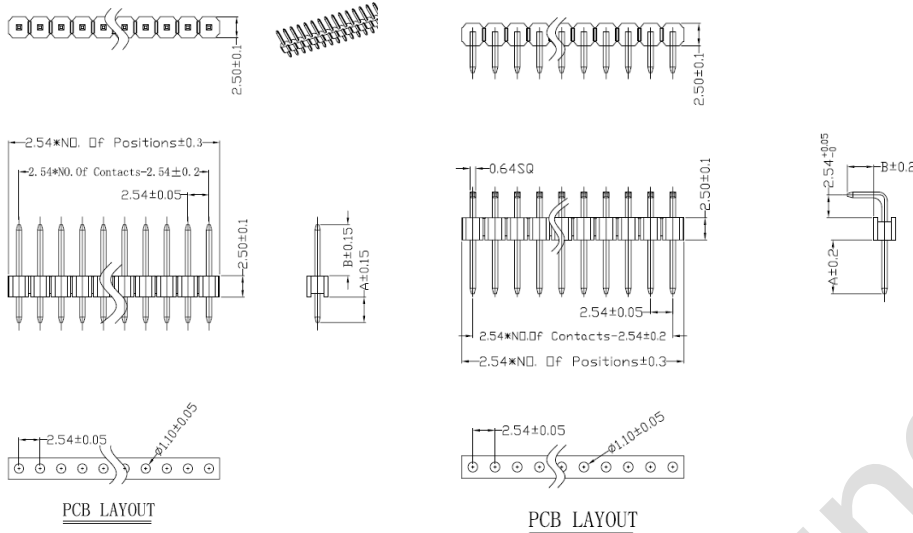


Male Connectors

Through Hole Type



Materials:

Insulator: PBT+30% GF UL94-V0, Black
 Contact: Brass
 Plated: Contact GOLD 0.3u" over 50u"Ni.

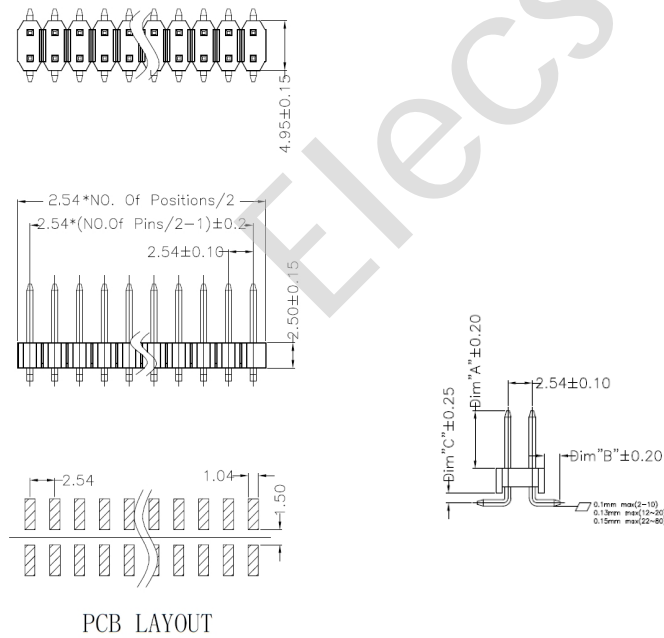
Electrical Characteristics:

Current Rating: 3 Amp
 Contact Resistance: 20M ohm Max.
 Withstanding Voltage: 500V AC/Minute
 Insulation Resistance: 1000M ohm Min.
 Operation Temperature: -40°C ~ +105°C

TH Contact Length: Ax B

- 1: 3.0x6.0 mm
- 2: 2.4x6.0 mm
- 3: 4.5x6.0 mm

SMD Type



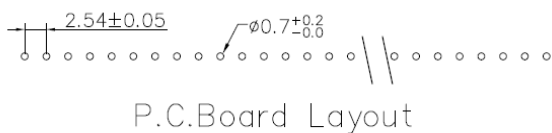
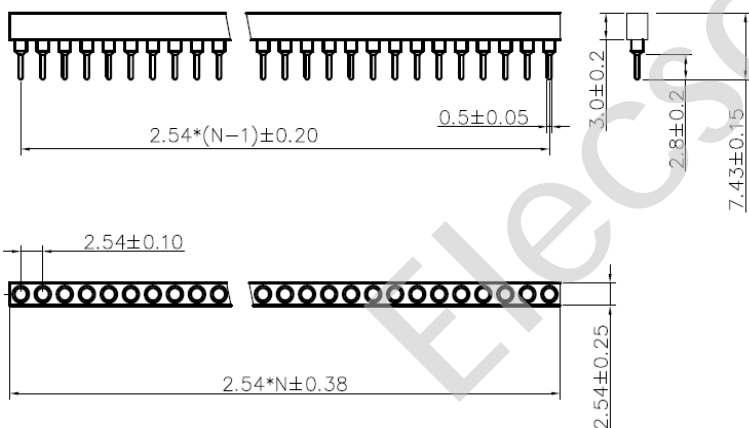
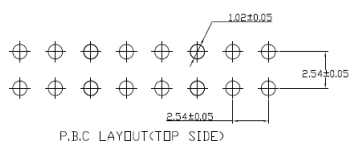
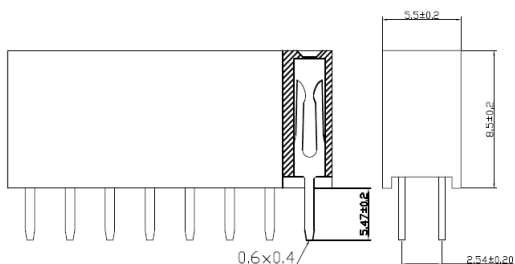
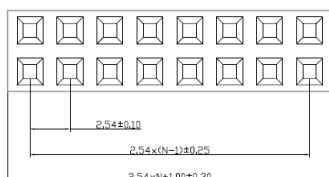
SMD Contact Length: Ax B

- 1: 3.0x6.0 mm
- 2: 2.4x6.0 mm
- 3: 4.5x6.0 mm
- 5: 2.54x5.84 mm
- 7: 3.2x5.84 mm
- 8: 3.0x10.0 mm

Dim "C"

- 2: 1.0 mm
- 3: 2.54 mm
- 4: 1.7 mm
- 5: 0.48 mm

Female Connectors



Materials:

Insulator: PBT+30%GF or NYLON UL94-V0, Black

Contact: Brass or Phosphor Bronze

Plated: Contact: AU or Sn over 50u"Ni.

Electrical Characteristics:

Current Rating: 3 Amp

Contact Resistance: 20M ohm Max.

Withstanding Voltage: 500V AC/Minute

Insulation Resistance: 1000M ohm Min.

Operation Temperature: -25°C ~ +105°C