

Single Turn Potentiometer

ET3309 Cermet Trimming Potentiometer

ELECSOUND®

Round/ Single-Turn/ Cermet/ Industrial

2 Terminal Styles

Rohs Compliant

Electrical Characteristics

Standard Resistance Range: 100Ω - 2MΩ

Resistance Tolerance: ±30% std.

Absolute Minimum Resistance: ≤1% max.

Contact Resistance Variation: ≤3% max.

Resistance: Essentially infinted

Adjustment Angle: 235° normal

Environmental Characteristics

Power Rating:(50VDC max)0.5W@70°C

Temperature Range: -30°C to +100°C

Temperature Coefficient: ±250ppm/°C

Load Life: 1000hours , 0.3W @70°C

Physical Characteristics

Mechanical Angle: 260° ±10°

Operating Torque: ≤30mN·m

Terminals: Solderable pins

Marking: Resistance code

Standard Packaging: 200pcs per bag

How To Order:

ET3309 W - 1 - 103

Model _____
 Style _____
 P = Top adjust
 W = Single side (front) adjust
 Rotor Style _____
 -1 = Standard
 Resistance Code _____

Standard Resistance Table:

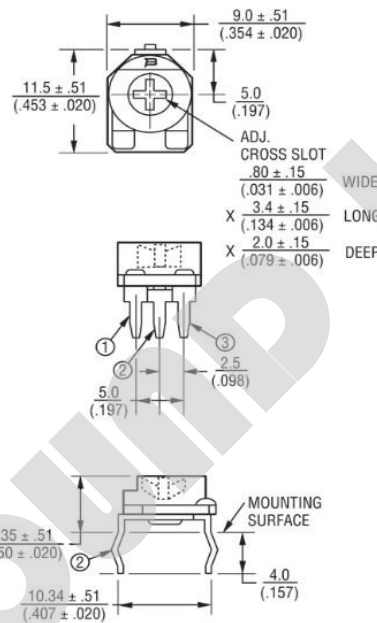
Resistance (Ohms)	Resistance Code
100	101
200	201
500	501
1000	102
2000	202
5000	502
10000	103
20000	203
25000	253
50000	503
100000	104
200000	204
250000	254
500000	504
1000000	105
2000000	205

Special Resistance Available

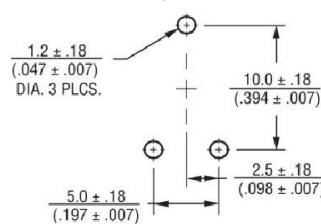


ET3309 Common Dimension

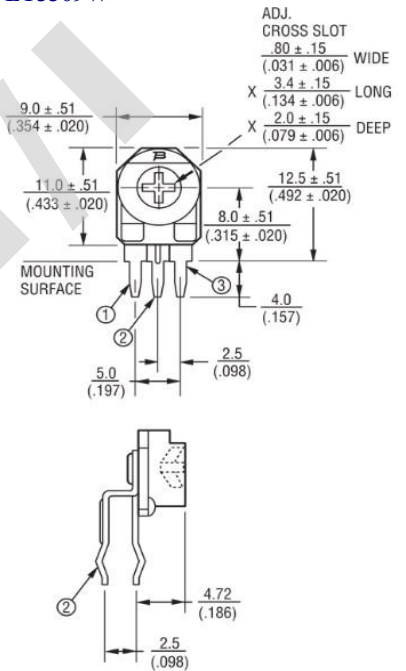
ET3309P



ET3309P-PCB layout



ET3309W



ET3309W-PCB layout

